

62

1/9571

AT THE CENTER OF THE SOUTH

The **SOUTHERN** AND
Established in 1872

NURSERY
LANDSCAPE

CO.
INC.

TELEPHONE WO 7-2302

WINCHESTER, TENNESSEE



Special Price List

For The Trade Only

Bulk Rate
U. S. POSTAGE
PAID
Permit 85
Winchester, Tenn.

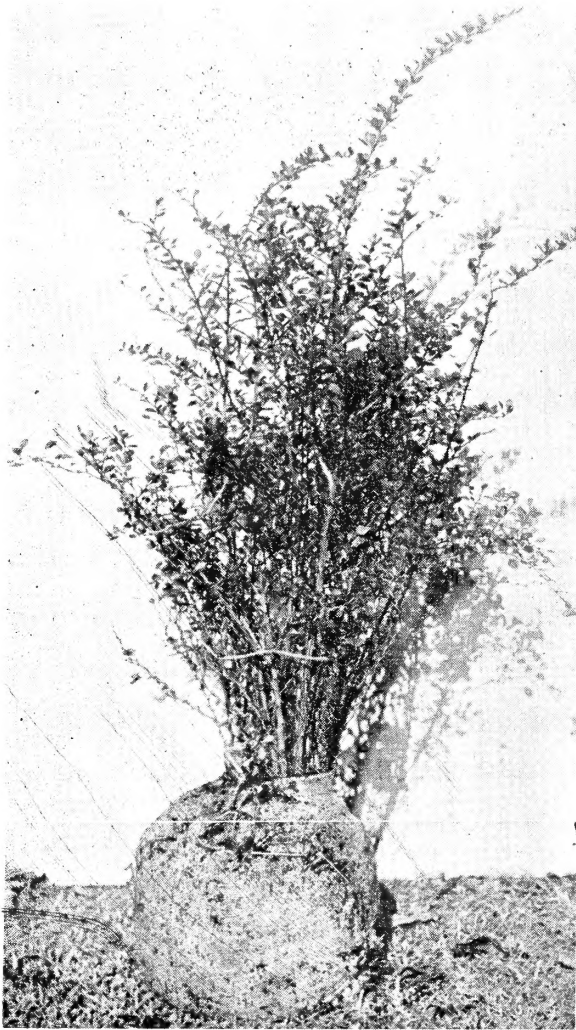
LIBRARY
RECEIVED
★ NOV 21 1957 ★
U. S. Department of Agriculture

Library, U. S. Department of Agriculture
Washington, 25, D. C.

Postmaster: Form 3547 Requested

DECIDUOUS SHRUBS

| | |
|--|----------|
| ALTHEA, Pink, Red, White and Variegated | |
| 18-24" | @ \$.20 |
| 2- 3' | @ .30 |
| 3- 4' | @ .40 |
| AZALEA, Poukhanensis | |
| 9-12" B&B | @ \$1.25 |
| 12-15" B&B | @ 1.50 |
| 15-18" B&B | @ 1.75 |



| | |
|---|----------|
| BERBERIS, Thunbergi Atro- purpurea (Red Leaf Barberry) | |
| 12-18" | @ \$.30 |
| 18-24" | @ .40 |
| 24-30" | @ .50 |
| B. & B. 50c Extra | |

| | |
|--|----------|
| BUDDLEIA—Orchid Butterfly Bush | |
| 18-24" | @ \$.25 |
| 2- 3' | @ .30 |
| 3- 4' | @ .40 |
| CRAPE MYRTLE—Pink, Red & White | |
| 18-24" | @ \$.40 |
| 2- 3' | @ .50 |
| 3- 4' | @ .60 |
| CYDONIA JAPONICA—Red | |
| 12-18" | @ \$.25 |
| 18-24" | @ .35 |
| 2- 3' | @ .50 |
| DEUTZIA, Crenata—Pink | |
| 18-24" | @ \$.15 |
| 2- 3' | @ .25 |
| 3- 4' | @ .40 |
| DEUTZIA, Pride of Rochester | |
| 2- 3' | @ \$.25 |
| 3- 4' | @ .30 |
| 4- 5' | @ .40 |
| FORSYTHIA, Intermedia and Spectabilis | |
| 2- 3' | @ \$.30 |
| 3- 4' | @ .40 |
| 4- 5' | @ .60 |
| FORSYTHIA, Spring Glory | |
| 12-18" | @ \$.20 |
| 18-24" | @ .25 |
| 2- 3' | @ .35 |
| JASMINE, Floridum & Nudiflorum,—Heavy | |
| 18-24" | @ \$.50 |
| 24-30" | @ .60 |
| KOLKWITZIA, (Beauty Bush) | |
| 18-24" | @ \$.30 |
| 2- 3' | @ .40 |
| LONICERA, Fragrantissima | |
| 18-24" | @ \$.30 |
| 2- 3' | @ .40 |
| 3- 4' | @ .50 |
| LONICERA, Tatarica (Pink or White) | |
| 2- 3' | @ \$.30 |
| 3- 4' | @ .40 |
| PHILADELPHUS, Coronarius | |
| 18-24" | @ \$.25 |
| 2- 3' | @ .35 |
| 3- 4' | @ .45 |

| | |
|--|----------|
| PHILADELPHUS, Virginalis | |
| 18-24" | @ \$.30 |
| 2- 3' | @ .40 |
| 3- 4' | @ .60 |
| RHUS COTINUS (Smoke Tree) | |
| 2- 3' | @ \$.50 |
| 3- 4' | @ .60 |
| 4- 5' | @ .75 |
| SPIREA, Froebeli | |
| 18-24" | @ \$.30 |
| 24-30" | @ .40 |
| 30-36" | @ .50 |
| SPIREA, Prunifolia | |
| 2- 3' | @ \$.30 |
| SPIREA, Thunbergi | |
| 15-18" | @ \$.25 |
| 18-24" | @ .35 |
| 24-30" | @ .45 |
| 30-36" | @ .55 |
| SPIREA, Trichocarpa—(Korean Spirea) | |
| 2- 3' | @ .40 |
| 3- 4' | @ .50 |
| SPIREA, Van Houtte | |
| 12-18" | @ \$.10 |
| 18-24" | @ .15 |
| 2- 3' | @ .20 |
| 3- 4' | @ .30 |
| 4- 5' | @ .40 |
| SYMPHORICARPOS, Chenaulti (Improved Coralberry) | |
| 18-24" | @ \$.20 |
| 2- 3' | @ .25 |
| 3- 4' | @ .35 |
| SYRINGA (Hybrid French Lilacs) Named Varieties | |
| 18-24" | @ \$.60 |
| 2- 3' | @ .75 |
| Alphonse Lavallee—Dbl. Lavender | |
| Charles X—Single Red | |
| Michel Buchner—Dbl. Lavender | |
| Mme. Casimir Perier—Dbl. White | |
| Pres. Grevy—Double Blue | |
| VIBURNUM, Carlesii | |
| 12-15" | @ \$1.00 |
| VIBURNUM, Lantana | |
| 12-18" | @ \$.20 |
| 18-24" | @ .25 |
| WEIGELA, Rosea | |
| 2- 3' | @ \$.30 |
| 3- 4' | @ .40 |
| 4- 5' | @ .50 |



Forsythia Spring Glory & Weigela Vaniceki—Field Grown Liners

SPECIAL LIST — TRANSPLANTED, BED GROWN & POTTED LINERS





TRANSPLANTED LINERS --

| | |
|---------------------------|----------|
| ABELIA, Ed Goucher | @ \$.15 |
| 3- 6 inches | |
| ABELIA, Grandiflora | @ .10 |
| 9-12 inches | |
| 12-15 inches | @ .15 |
| ALMOND Pink Flg. | @ .10 |
| 9-12 inches | |
| 12-15 inches | @ .12 |
| 15-18 inches | @ .15 |
| AZALEA, Poukhanensis | @ .40 |
| 3- 6 inches | |
| 6- 9 inches | @ .50 |
| CORNUS, Florida Plena | @ .50 |
| (Dbl. White Dogwood) | |
| 6-12 inches | @ .75 |
| 12-18 inches | @ 1.00 |
| 18-24 inches | |
| CORNUS, Florida Rubra | @ .50 |
| (Pink Flg. Dogwood) | |
| 6-12 inches | @ .75 |
| 12-18 inches | @ 1.00 |
| 18-24 inches | |
| CRAPE MYRTLE, Wm. Toovey | @ .12 |
| 9-12 inches | |
| 12-15 inches | @ .15 |
| ELAEAGNUS, Reflexa | @ .10 |
| 4- 6 inches | |
| 6- 9 inches | @ .12 |
| FORSYTHIA, Spring Glory | @ .06 |
| 4- 6 inches | |
| 6-12 inches | @ .10 |
| 12-15 inches | @ .15 |
| 15-18 inches | @ .20 |
| HYDRANGEA, P. G. | @ .10 |
| 6-12 inches | |
| 12-15 inches | @ .12 |
| ILEX, Burfordi | @ .30 |
| 6- 9 inches | |
| 9-12 inches | @ .40 |
| ILEX, Cornuta Femina | @ .15 |
| 6- 9 inches | |
| ILEX, Crenata Convexa | @ .30 |
| 6- 9 inches | |
| 9-12 inches | @ .40 |
| ILEX, East Palatka | @ .15 |
| 6- 9 inches | |
| 9-12 inches | @ .20 |
| ILEX, Rotundifolia | @ .40 |
| 6- 9 inches Spread | |
| 9-12 inches Spread | @ .50 |
| JASMINE, Floridum | @ .06 |
| 6- 9 inches | |
| 9-12 inches | @ .10 |
| 12-15 inches | @ .15 |
| JASMINE, Nudiflorum | @ .06 |
| 3- 6 inches | |
| 9-12 inches | @ .10 |
| 12-15 inches | @ .15 |
| JUNIPER, Depressa Plumosa | @ .30 |
| 3- 6 inches Spread | |
| 6- 9 inches Spread | @ .40 |
| 9-12 inches Spread | @ .50 |
| JUNIPER, Excelsa Stricta | @ .15 |
| 6- 9 inches | |
| 9-12 inches | @ .25 |
| JUNIPER, Hetzi | @ .20 |
| 4- 6 inches Spread | |
| 6- 9 inches Spread | @ .30 |
| 9-12 inches Spread | @ .50 |
| 12-15 inches Spread | @ .60 |
| JUNIPER, Pfitzer | @ .20 |
| 4- 6 inches Spread | |
| 6- 9 inches Spread | @ .30 |
| 9-12 inches Spread | @ .40 |

| | |
|--------------------------|-------|
| JUNIPER, Tamariscifolia | @ .15 |
| 6- 9 inches | |
| MAGNOLIA, Grandiflora | @ .12 |
| 6- 9 inches | |
| PHILADELPHUS, Virginalis | @ .10 |
| 9-12 inches | |
| 12-15 inches | @ .15 |
| 15-18 inches | @ .20 |
| POMEGRANATE, Dwarf | @ .10 |
| 6- 9 inches | |
| 9-12 inches | @ .15 |
| SPIREA, Froebeli | @ .10 |
| 9-12 inches | |
| 12-15 inches | @ .12 |
| 15-18 inches | @ .15 |
| SPIREA, Van Houtte | @ .08 |
| 9-12 inches | |
| 12-18 inches | @ .12 |
| 18-24 inches | @ .15 |
| VIBURNUM, Opulus Sterile | @ .08 |
| (Common Snowball) | |
| 4- 6 inches | |
| 6- 9 inches | @ .10 |
| 9-12 inches | @ .12 |
| VIBURNUM, Rhytidophyllum | @ .15 |
| (Leatherleaf Viburnum) | |
| 6- 9 inches | |
| 9-12 inches | @ .25 |
| 12-15 inches | @ .40 |
| WEIGELA, Vaniceki | @ .08 |
| 6- 9 inches | |
| 9-12 inches | @ .12 |
| 12-15 inches | @ .20 |

OPEN BED CUTTING GROWN LINERS:

| | |
|---------------------|-------|
| ABELIA, Grandiflora | @ .10 |
| 12-15 inches | |
| 15-18 inches | @ .15 |
| ALTHEA, Blue | @ .05 |
| 6- 9 inches | |
| 9-12 inches | @ .10 |



Juniperus Hetzi & Juniperus Pfitzeriana—Field Grown Liners

| | |
|-------------------------|--------|
| AZALEA, Poukhanensis | @ .20 |
| 9-12 inches | |
| 12-15 inches | @ .30 |
| CRAPE MYRTLE, White | @ .08 |
| 6- 9 inches | |
| 9-12 inches | @ .10 |
| 12-18 inches | @ .15 |
| 18-24 inches | @ .25 |
| 2- 3 feet | @ .35 |
| CRAPE MYRTLE, Red | @ .08 |
| 6- 9 inches | |
| 9-12 inches | @ .10 |
| 12-18 inches | @ .15 |
| 18-24 inches | @ .25 |
| CYDONIA, Japonica (Red) | @ .10 |
| 6-12 inches | |
| 12-18 inches | @ .15 |
| 18-24 inches | @ .20 |
| FORSYTHIA, Spring Glory | @ .06 |
| 9-12 inches | |
| 12-18 inches | @ .10 |
| 18-24 inches | @ .15 |
| HYDRANGEA, P. G. | @ .08 |
| 6-12 inches | |
| 12-15 inches | @ .10 |
| 15-18 inches | @ .15 |
| ILEX, Burfordi | @ .20 |
| 6- 9 inches | |
| 9-12 inches | @ .30 |
| 12-18 inches | @ .50 |
| 18-24 inches | @ .60 |
| ILEX, Cornuta Femina | @ .10 |
| 6- 9 inches | |
| 9-12 inches | @ .20 |
| 12-15 inches | @ .25 |
| 15-18 inches | @ .35 |
| 18-24 inches | @ .50 |
| ILEX, Crenata Convexa | @ .25 |
| 9-12 inches | |
| 12-15 inches | @ .40 |
| ILEX, East Palatka | @ .50 |
| 18-24 inches | |
| 2- 3 feet | @ .60 |
| 3- 4 feet | @ .75 |
| 4- 5 feet | @ 1.00 |
| ILEX, Opaca, Femina | @ .20 |
| 4- 6 inches | |
| 6- 9 inches | @ .30 |
| 9-12 inches | @ .40 |
| ILEX, Opaca, Male | @ .15 |
| 4- 6 inches | |
| 6- 9 inches | @ .20 |
| 9-12 inches | @ .35 |
| ILEX, Rotundifolia | @ .10 |
| 4- 6 inches | |
| 6- 9 inches | @ .12 |
| 9-12 inches | @ .15 |
| 12-15 inches | @ .20 |

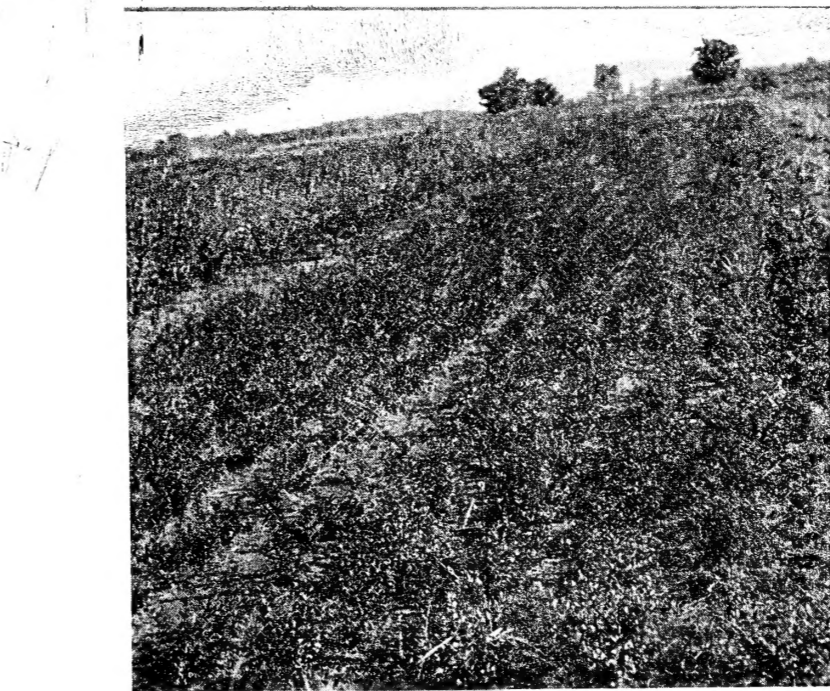
OPEN BED -- SEEDLING GROWN LINERS

| | |
|-----------------------------------|-------|
| ILEX, Crenata Convexa | @ .15 |
| 6- 9 inches | |
| 9-12 inches | @ .25 |
| 12-15 inches | @ .40 |
| MAGNOLIA, Grandiflora (Seedlings) | @ .08 |
| 4- 6 inches | |
| 6- 9 inches | @ .10 |
| JUNIPER, Horizontalis—Glauca | @ .10 |
| 6- 9 inches | |
| 9-12 inches | @ .15 |
| 12-15 inches | @ .25 |
| KOLKWITZIA (Beauty Bush) | @ .10 |
| 18-24 inches | |
| 2- 3 feet | @ .20 |
| 3- 4 feet | @ .30 |



Juniperus Depressa Plumosa—Field Grown Liners

| | |
|---------------------------------|-------|
| NANDINA DOMESTICA | @ .08 |
| 4- 6 inches | |
| 6- 8 inches | @ .10 |
| PYRACANTHA, Graberi (Red Berry) | @ .50 |
| 12-18 inches | |
| 18-24 inches | @ .60 |
| SPIREA, Froebeli | @ .08 |
| 6- 9 inches | |
| VIBURNUM, Burkwoodi | @ .15 |
| 4- 6 inches | |
| 6- 9 inches | @ .20 |
| VIBURNUM, Carlesi | @ .15 |
| 6- 9 inches | |
| 9-12 inches | @ .25 |
| 12-15 inches | @ .40 |
| VIBURNUM, Lantana | @ .10 |
| 9-12 inches | |
| 12-15 inches | @ .15 |
| 15-18 inches | @ .20 |
| VIBURNUM, Opulus Sterile | @ .08 |
| (Common Snowball) | |
| 6- 9 inches | |
| VIBURNUM, Rhytidophyllum | @ .15 |
| (Leatherleaf Viburnum) | |
| 6- 9 inches | |
| 9-12 inches | @ .25 |
| 12-18 inches | @ .40 |
| VIBURNUM, Tomentosum Plicatum | @ .10 |
| (Japanese Snowball) | |
| 6- 9 inches | |
| 9-12 inches | @ .20 |
| 12-15 inches | @ .30 |



Ilex Rotundifolia—Field Grown Liners

POTTED LINERS:

| | |
|---------------------------|--------|
| ABELIA, Grandiflora | @ .10 |
| 2 inch Pots | |
| CRAPE MYRTLE, Red & White | @ .15 |
| 2 1/4 inch Pots | |
| ELAEAGNUS, Fruitlandi | @ .15 |
| 2 1/2 inch Pots | |
| 4 inch Pots | @ .30 |
| FORSYTHIA, Spring Glory | @ .20 |
| 3 inch Bands | |
| GARDENIA | @ .15 |
| 2 1/2 inch Pots | |
| HYDRANGEA, French | @ .25 |
| 2 1/2 inch Pots | |
| ILEX, Cornuta Femina | @ .30 |
| 2 1/4 inch Pots | |
| 3 inch Bands | |
| -12-15 inches | @ .40 |
| 8 inch Pots | @ 1.50 |
| ILEX, Crenata Convexa | @ .20 |
| 2 inch Pots | |
| ILEX, East Palatka | @ .40 |
| 4 inch Pots | |
| ILEX, Opaca, Femina | @ .50 |
| 3 inch Pots | |
| 4 inch Pots | @ .60 |
| 5 inch Pots | @ .65 |
| ILEX, Rotundifolia | @ .20 |
| 2 inch Pots | |
| 2 1/4 inch Pots | @ .25 |
| IVY, English | @ .15 |
| 2 1/4 inch Pots | |

| | |
|------------------------------------|--------|
| IVY, Self-Branching | @ .15 |
| 2 inch Pots | |
| JASMINE, Nudiflorum | @ .10 |
| 2 inch Pots | |
| JUNIPER, Depressa Plumosa | @ .20 |
| 2 inch Pots | |
| 2 1/4 inch Pots | @ .30 |
| JUNIPER, Hetzi | @ .20 |
| 2 1/4 inch Pots | |
| JUNIPER, Pfitzer | @ .15 |
| 2 inch Pots | |
| JUNIPER, Tamariscifolia | @ .20 |
| 2 inch Pots | |
| LAUREL, Cherry | @ .25 |
| 3 inch Pots | |
| LUCIDUM, Ligustrum | @ .15 |
| 2 1/4 inch Pots | |
| 2 1/2 inch Pots | @ .20 |
| MAGNOLIA, Grandiflora | @ .20 |
| 2 1/2 inch Pots | |
| 4 inch Pots | @ .50 |
| MAHONIA, Bealei | @ .15 |
| 2 inch Pots | |
| PYRACANTHA, Graberi (Red Berry) | @ .15 |
| 2 inch Pots | |
| 8 inch Pots | @ 2.50 |
| PYRACANTHA, Lalandi (Orange Berry) | @ .15 |
| 2 inch Pots | |
| 8 inch Pots | @ 2.50 |
| VIBURNUM, Opulus Sterile | @ .10 |
| 3 inch Bands | |
| VIBURNUM, Rhytidophyllum | @ .25 |
| 2 1/4 inch Pots | |
| WEIGELA, Eva Rathke | @ .12 |
| 2 inch Pots | |
| WEIGELA, Vaniceki | @ .25 |
| 3 inch Bands | |



Jasmine Floridum—Field Grown Liners

FRUIT TREES

APPLE—2 Yr. Branched

| | | |
|----|--------------------------|----------|
| 5 | to 6 ft., 1 in. Cal. | @ \$.85 |
| 4½ | to 6 ft., 11/16 in. Cal. | @ .70 |
| 4 | to 5 ft., 9/16 in. Cal. | @ .60 |
| 3 | to 4 ft., 7/16 in. Cal. | @ .50 |

Varieties:

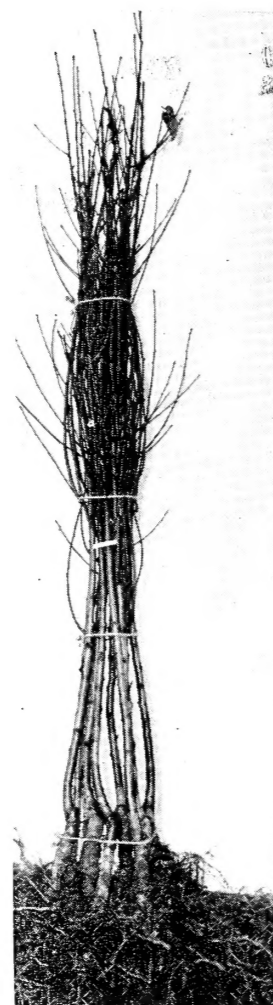
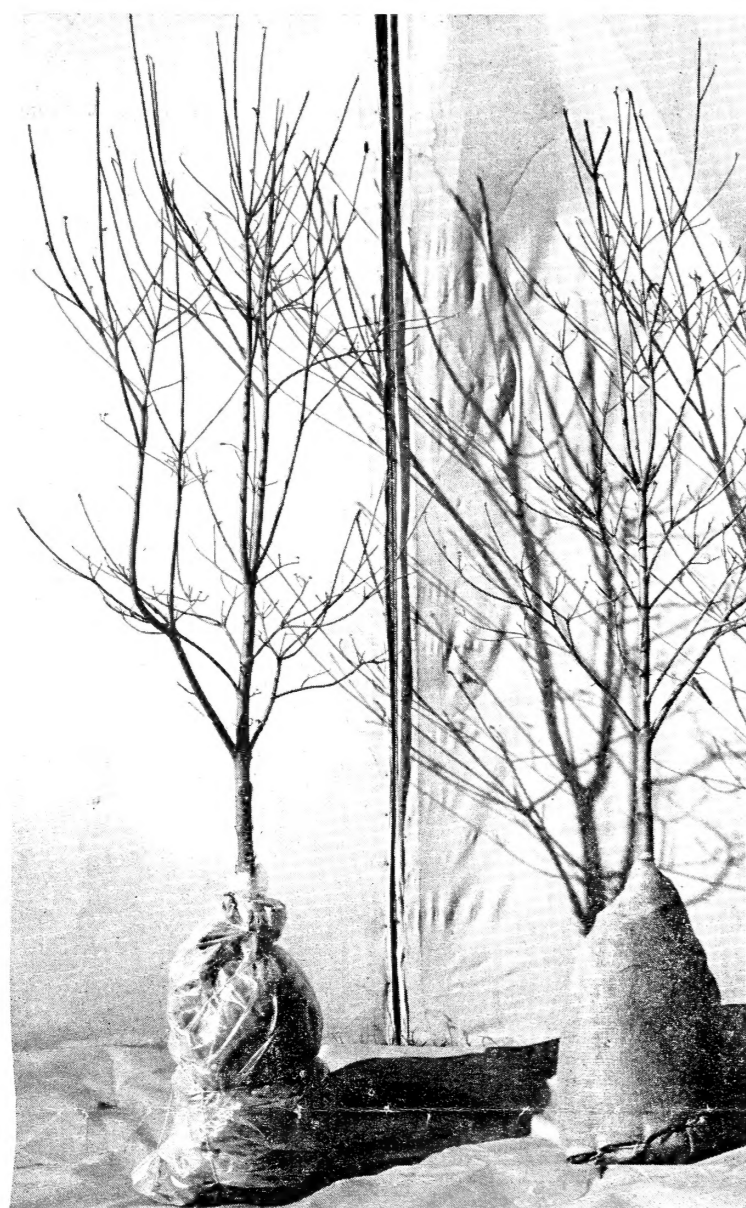
| | |
|---------------------|--------------------|
| Anoka | Red Rome Beauty |
| Delicious, Dbl. Red | Rome Beauty |
| Delicious, Golden | Stayman |
| Early Harvest | Turley |
| Grimes Golden | Wilson Red June |
| Hyslop Crab | Winesap |
| Jonathan | Yates |
| Lawland Raspberry | Yellow Horse |
| Lodi | Yellow Transparent |
| McIntosh | York Imperial |

PEACH—1 Yr.

| | | |
|----|--------------------------|----------|
| 5 | to 6 ft., 1 in. Cal. | @ \$.75 |
| 4½ | to 6 ft., 11/16 in. Cal. | @ .60 |
| 4 | to 5 ft., 9/16 in. Cal. | @ .50 |
| 3 | to 4 ft., 7/16 in. Cal. | @ .40 |
| 2 | to 3 ft., 5/16 in. Cal. | @ .30 |

Varieties:

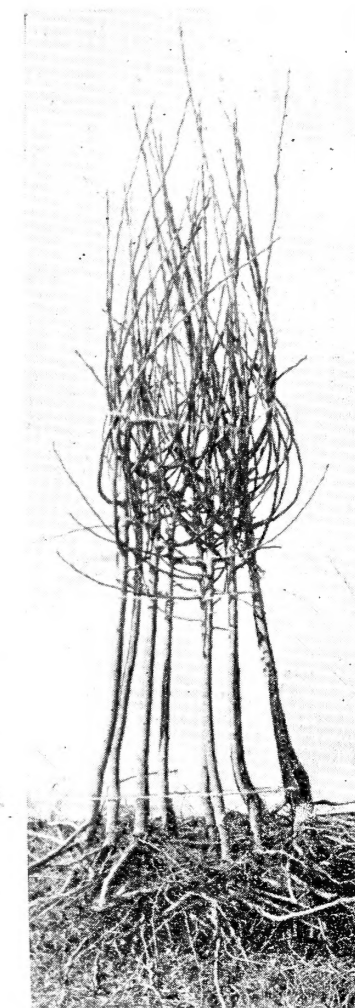
| | |
|---------------------------|--------------|
| Ambergem | Indian Cling |
| Belle of Georgia | Kalhaven |
| Champion | Keystone |
| Chinese Cling | Mayflower |
| Dixigem | Ranger |
| Dixired | Redglobe |
| Elberta | Red Haven |
| Elberta, Sullivan's Early | Rich Haven |
| Fair Beauty | Rio-Oso-Gem |
| Fair Haven | Rochester |
| Golden Jubilee | Southland |
| Hale Haven | Sun Haven |
| Hiland | Sunhigh |



Peach



MALUS HOPA (Hopa Flg. Crabs)—2 Year



Malus Dolgo (Dolgo Flg. Crab)

DOGWOOD

- CORNUS FLORIDA RUBRA (Red Flowering Dogwood)
- CORNUS FLORIDA ALBA PLENA (Dbl. White Flowering Dogwood)
- CORNUS FLORIDA (Single White Flowering Dogwood)

The roots of the above plants can be packed with sphagnum moss covered with Polyethylene to seal in moisture and seal out the air. Burlap is placed over Polyethylene for protection. A 5 to 6 ft. Dogwood balled in earth should weigh approximately 100 lbs. or more while the moss, polyethylene and burlap only weigh approximately 20 lbs.

CORNUS FLORIDA PLENA (Dbl. White Flowering Dogwood)—
With Bloom Buds

| | | |
|--------|---------|----------|
| 12-18" | not B&B | @ \$1.00 |
| 18-24" | not B&B | @ 1.25 |
| 2- 3' | not B&B | @ 1.50 |
| 3- 4' | not B&B | @ 2.50 |

CORNUS FLORIDA RUBRA (Pink Dogwood)

| | | |
|--------|---------|----------|
| 12-18" | not B&B | @ \$.75 |
| 18-24" | not B&B | @ 1.25 |
| 24-30" | not B&B | @ 1.50 |
| 30-36" | not B&B | @ 1.75 |

CORNUS FLORIDA RUBRA (Pink Dogwood) (Following Grades have Bloom Buds)

| | | |
|-------|---------|----------|
| 3- 4' | not B&B | @ \$2.50 |
| 4- 5' | not B&B | @ 4.00 |
| 3- 4' | B&B | @ 3.00 |
| 4- 5' | B&B | @ 4.50 |
| 5- 6' | B&B | @ 6.00 |

Balled with Sphagnum Moss, Same as Balled with Dirt.



APRICOT—1 Yr.

| | | |
|----|--------------------------|----------|
| 5 | to 6 ft., 1 in. Cal. | @ \$1.00 |
| 4½ | to 6 ft., 11/16 in. Cal. | @ .75 |
| 4 | to 5 ft., 9/16 in. Cal. | @ .60 |
| 3 | to 4 ft., 7/16 in. Cal. | @ .50 |
| 2 | to 3 ft., 5/16 in. Cal. | @ .40 |

Varieties:

| | |
|-----------------------|-----------------|
| Early Golden Moorpark | Northern Superb |
|-----------------------|-----------------|

CHERRY, SOUR—1 Yr.

| | | |
|----|--------------------------|----------|
| 4 | to 6 ft., 11/16 in. Cal. | @ \$1.00 |
| 3½ | to 5 ft., 9/16 in. Cal. | @ .80 |
| 3 | to 4 ft., 7/16 in. Cal. | @ .60 |
| 2 | to 3 ft., 5/16 in. Cal. | @ .50 |

Varieties:

| | |
|----------------|-------------|
| Early Richmond | Montmorency |
|----------------|-------------|



Our Calleryana Pear Orchard
These trees supply our blight resistant root stocks for propagating some of our Pear Trees.

PEAR—1 & 2 Yr. (Whips and Branched Trees)

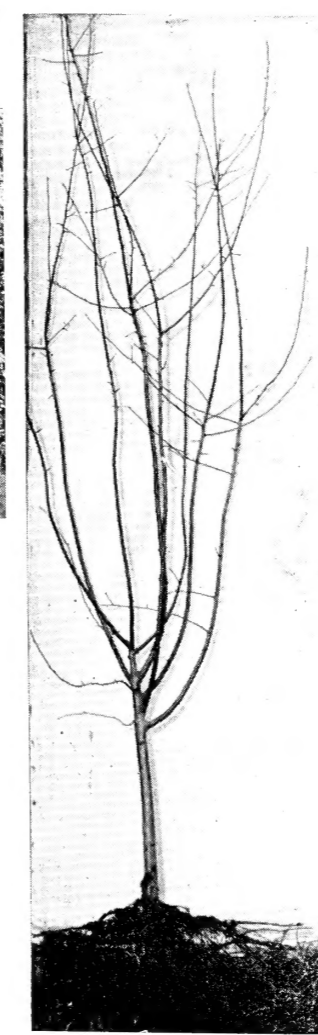
| | | |
|----|--------------------------|----------|
| 5 | to 6 ft., 1 in. Cal. | @ \$1.25 |
| 4½ | to 6 ft., 11/16 in. Cal. | @ .90 |
| 4 | to 5 ft., 9/16 in. Cal. | @ .75 |
| 3 | to 4 ft., 7/16 in. Cal. | @ .60 |
| 5 | to 6 ft., Whips | @ .70 |
| 4 | to 5 ft., Whips | @ .60 |
| 3 | to 4 ft., Whips | @ .50 |

Varieties:

| | |
|--------------------|----------------------|
| Bartlett | Douglas (Whips Only) |
| Dixie (Whips Only) | Orient |
| Kieffer | |

5-N-1 APPLE (5 Varieties on 1 Tree)

| | | |
|---|-------------------------|----------|
| 4 | to 5 ft., 9/16 in. Cal. | @ \$1.60 |
| 3 | to 4 ft., 7/16 in. Cal. | @ 1.25 |



Malus Arrow (Arrow Flg. Crab)

ORNAMENTAL TREES

FLOWERING CRABS -- GROUP No. 1: (Branched)

| | |
|------------------|----------|
| 3-4 ft., not B&B | @ \$.60 |
| 4-5 ft., not B&B | @ .80 |
| 5-6 ft., not B&B | @ 1.25 |
| 6-8 ft., not B&B | @ 2.50 |

Varieties:

ATROSANGUINEA (Carmine Buds with Flowers Fading to Dull Pink), DOLGO (White Flowers), ELEYI (Purplish-red Flowers), FLORIBUNDA (Deep Pink Blossoms Fade to White), FLORIBUNDA PURPUREA (Purplish-red Flowers), GENEVA (Purplish-red Flowers), GLORIOSA (Purplish-red Flowers), HOPA (Carmine Buds and Flowers Fade to Dull Pink), RED SILVER (Purplish-red Flowers), SCHEIDECKERI (Double, Pale Pink Flowers).

FLOWERING CRABS -- GROUP No. 2: (Branched)

| | |
|------------------|----------|
| 3-4 ft., not B&B | @ \$1.00 |
| 4-5 ft., not B&B | @ 1.25 |
| 5-6 ft., not B&B | @ 1.75 |

Varieties:

ALMEY (Carmine Buds and Flowers Fade to Pink), ARROW (Purplish-red Flowers), BACCATA (Fragrant, White Flowers), MAKAMIK (China-Rose Flowers).

VINE

EUONYMUS, Coloratus

| | | |
|--------|---------|-------|
| 12-15" | not B&B | @ 30c |
| 15-18" | not B&B | @ 40c |
| 18-24" | not B&B | @ 50c |

HEDGE

LIGUSTRUM, Sinensis (Amoor River South Privet)

| | |
|-------|----------|
| 2- 3' | @ \$.10 |
| 3- 4' | @ .15 |
| 4- 5' | @ .25 |

SOUTHERN NURSERY AND LANDSCAPE COMPANY
Winchester, Tennessee

CORNUS FLORIDA (White Flowering Dogwood)

- 18-24" not B&B @ \$.50
- 2- 3' not B&B @ .75
- 3- 4' not B&B @ 1.25

FLOWERING PEACH—Dbl. Pink, Dbl. Red, Dbl. White

- 4- 5' BR @ \$.75
- 5- 6' BR @ 1.00

MAGNOLIA GRANDIFLORA

- 2- 3' B&B @ \$2.50
- 3- 4' B&B @ 3.00
- 4- 5' B&B @ 4.00

PRUNUS TRILOBA (Flowering Plum)

- 2- 3' not B&B @ \$.50
- 3- 4' not B&B @ .60
- 4- 5' not B&B @ .80

PURPLE LEAF PLUM—Prunus Newport, Pissardi, and Thundercloud

- 3- 4' BR @ \$.60
- 4- 5' BR @ .80
- 5- 6' BR @ 1.00

SALIX BABYLONICA (Weeping Willow)

- 3- 4' not B&B @ \$.50
- 4- 5' not B&B @ .60
- 5- 6' not B&B @ .80
- 6- 8' not B&B @ 1.00

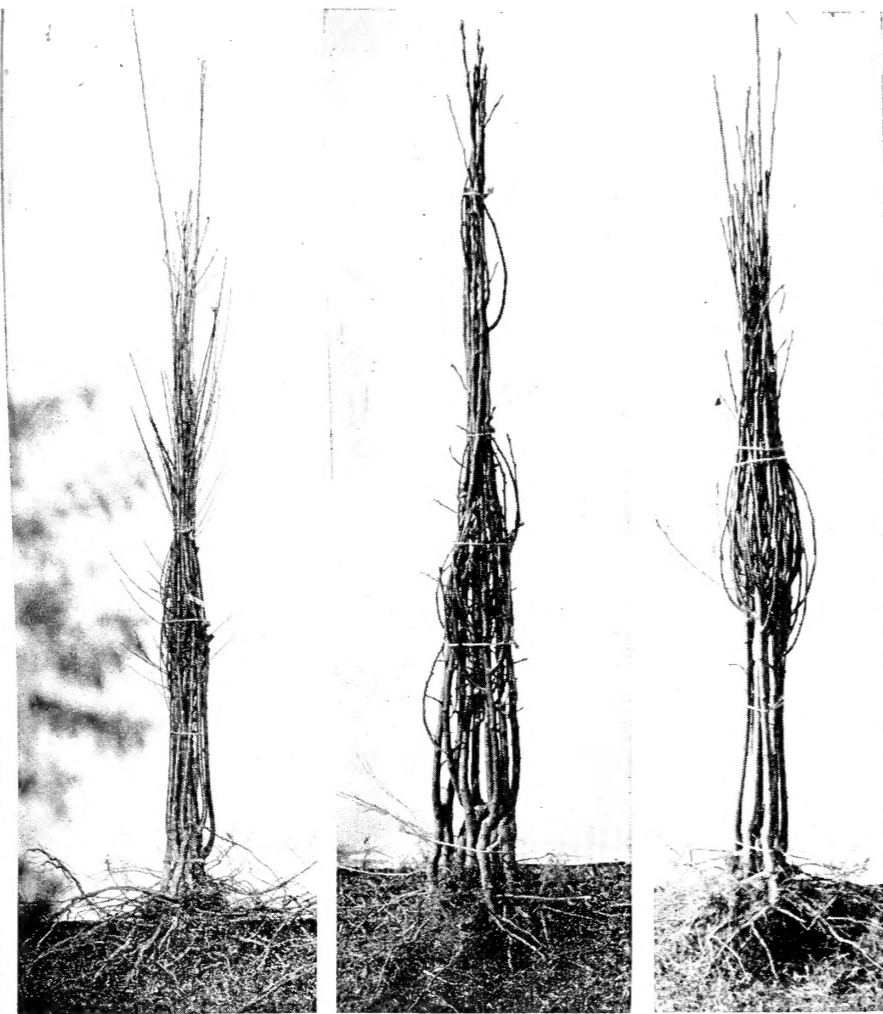
WISTERIA, TREE FORM—Purple

- 2- 3' BR @ \$2.25
- 3- 4' BR @ 3.00

(For B&B plants, add 50c per tree)



Salix Babylonica (Weeping Willow)



Plum Orient Pear Kieffer Pear

CHERRY, SWEET—1 Yr. Whips

- 5 to 6 ft. Whips @ \$1.25
- 4 to 5 ft. Whips @ 1.00
- 3 to 4 ft. Whips @ .70

Varieties:
Schmidt Windsor

DAMSON, PLUM, PRUNE, NECTARINE—1 Yr.

- 4 1/2 to 6 ft., 11/16 in. Cal. @ \$.80
- 4 to 5 ft., 9/16 in. Cal. @ .70
- 3 to 4 ft., 7/16 in. Cal. @ .60
- 2 to 3 ft., 5/16 in. Cal. @ .40

Varieties:
Abundance Shropshire Damson
Burbank Stanley Prune
Oka Hunter Nectarine
Opata
Sapa

FIGS—1 Yr.

- 2 to 3 ft. @ \$.50
- 18 to 24 in. @ .40

Varieties:
Brown Turkey Everbearing
Celeste

GRAPES—1 Yr., No. 1 @ \$.20

Varieties:
Catawba (Red) Fredonia (Blue)
Concord (Blue) Niagara (White)

CHESTNUTS, CHINESE and JAPANESE

- 6 to 7 ft. @ \$3.00
- 5 to 6 ft. @ 2.00
- 4 to 5 ft. @ 1.00
- 3 to 4 ft. @ .60
- 2 to 3 ft. @ .50

PECAN TREES—Florida Giant and Stuart

- 4 to 5 ft. @ \$2.25
- 3 to 4 ft. @ 1.75

BLACK WALNUT, 2 to 3 ft. @ \$1.25

BROADLEAF EVERGREENS

ABELIA, Edward Goucher

- 18-24" BR @ \$.60
- 18-24" B&B @ 1.00
- 24-30" BR @ .75
- 24-30" B&B @ 1.25
- 30-36" B&B @ 1.50



Abelia Grandiflora

ABELIA, Grandiflora

- 12-18" BR @ \$.30
- 18-24" BR @ .50
- 2- 3' BR @ .75
- 2- 3' B&B @ 1.25
- 3- 4' B&B @ 1.50
- 4- 5' B&B @ 2.00

ELAEAGNUS, Fruitlandi

- 2- 3' B&B @ 2.25
- 3- 4' B&B @ 2.75
- 4- 5' B&B @ 3.00

ELAEAGNUS, Reflexa

- 18-24" B&B @ \$1.75
- 2- 3' B&B @ 2.00
- 3- 4' B&B @ 2.50

EUONYMUS, Carrierei

- 12-18" B&B @ \$1.00
- 18-24" B&B @ 1.50

EUONYMUS, Japonica

- 18-24" B&B @ \$1.25
- 2- 3' B&B @ 1.75

EUONYMUS, Patens

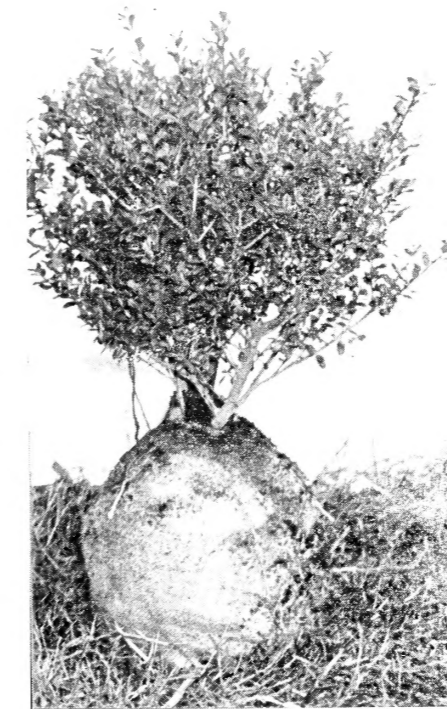
- 12-18" B&B @ \$1.25
- 18-24" B&B @ 1.50
- 2- 3' B&B @ 1.75

ILEX, Cornuta

- 12-18" B&B @ \$2.00
- 18-24" B&B @ 2.50
- 24-30" B&B @ 3.00

ILEX, East Palatka

- 2- 3' B&B @ \$2.50
- 3- 4' B&B @ 3.00



Ilex Rotundifolia

ILEX, Rotundifolia

- 12-18" B&B @ \$1.75
- 18-24" B&B @ 2.50

LIGUSTRUM, Lucidum

- 2- 3' B&B @ \$1.50
- 3- 4' B&B @ 2.00



Nandina Domestica

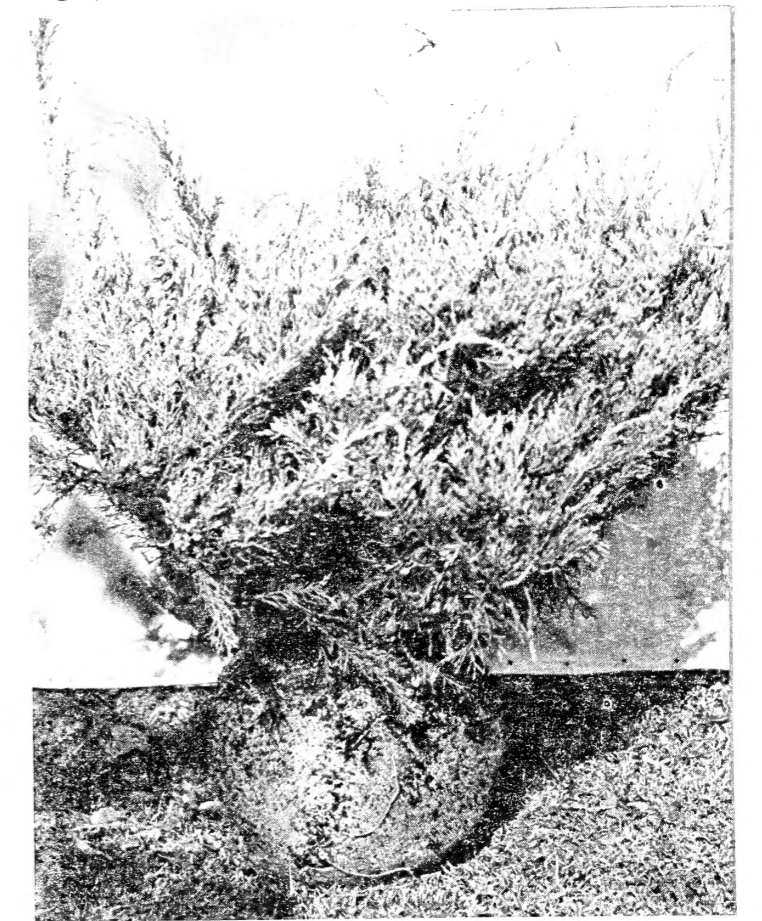
NANDINA, Domestica

- 18-24" B&B @ \$1.25
- 24-30" B&B @ 1.50
- 30-36" B&B @ 2.00
- 3- 4' B&B @ 2.50

VIBURNUM, Rhytidophyllum

- 24-30" B&B @ \$2.50
- 30-36" B&B @ 3.00

CONIFEROUS EVERGREENS



Juniperus Hetzi

CEDRUS, Deodara

- 3- 4' B&B @ 3.50
- 4- 5' B&B @ 4.00
- 5- 6' B&B @ 5.50

JUNIPER, Hibernica Fastigiata

- 2- 3' B&B @ \$1.50
- 3- 4' B&B @ 1.75
- 4- 5' B&B @ 2.25
- 5- 6' B&B @ 2.75

HEMLOCK, Spruce

- 2- 3' B&B @ \$3.00
- 3- 4' B&B @ 4.00
- 4- 5' B&B @ 5.00

JUNIPER, Pfitzer

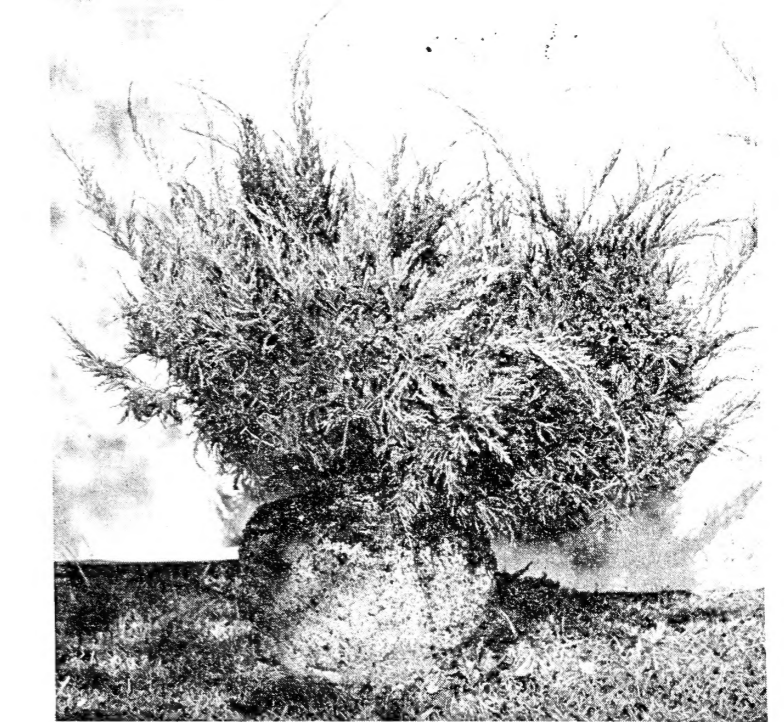
- 15-18" B&B @ \$1.75
- 18-24" B&B @ 2.25
- 24-30" B&B @ 3.00
- 30-36" B&B @ 3.50

JUNIPER, Hetzi

- 24-30" B&B @ \$2.50
- 30-36" B&B @ 3.00
- 3- 4' B&B @ 3.50

JUNIPER, Savin

- 18-24" B&B @ 2.00
- 24-30" B&B @ 2.25



Juniperus Pfitzeriana

SOUTHERN NURSERY AND LANDSCAPE COMPANY
Winchester, Tennessee

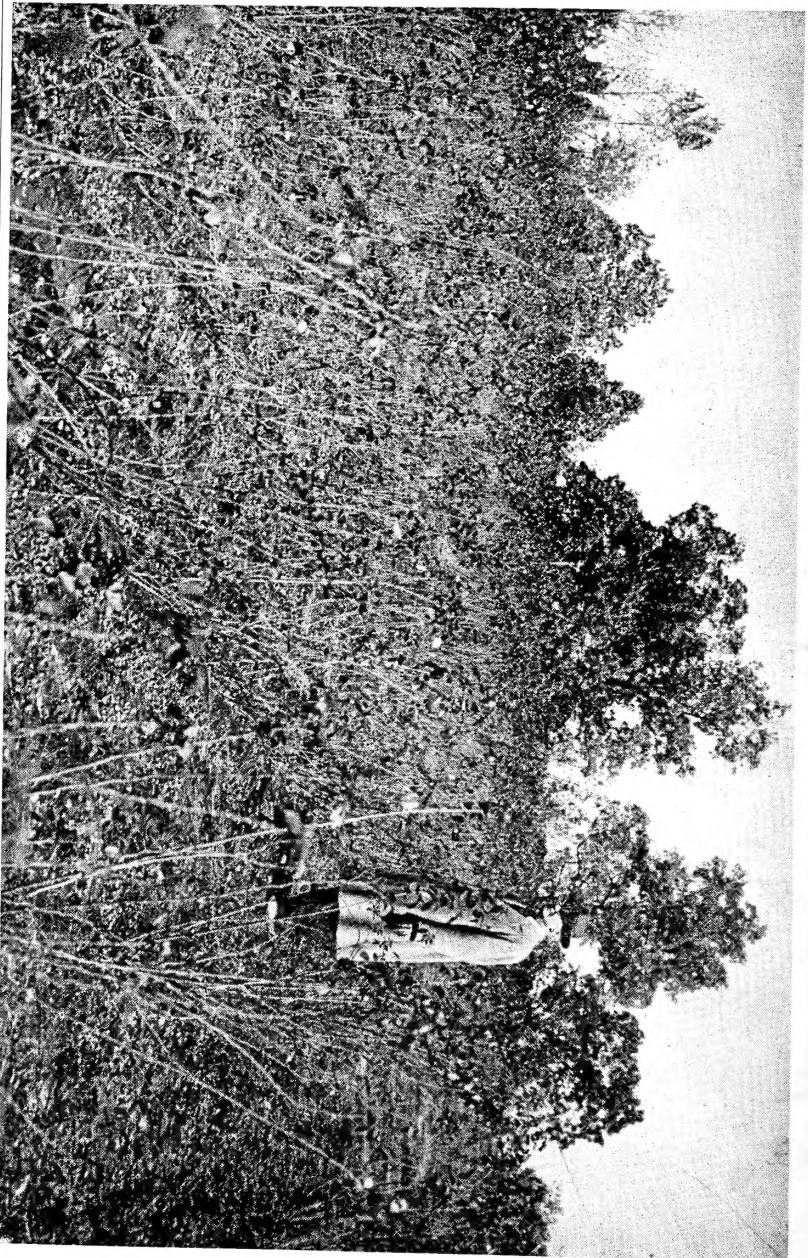


ROSES

No. 1 @ \$.50
No. 1½ @ .40

Varieties:

- Blaze Climber
- Paul Scarlet Climber
- Climbing Etoile de Hollande
- Climbing Talsiman
- Mrs. Charles Bell
- Pink Radiance
- Red Radiance



TERMS: Cash with order, or satisfactory reference from parties who have not established credit with us. To firms whose credit has been established, terms are net 30 days from date of invoice. C. O. D. orders must be accompanied by at least 25% of the total order. Stock travels at Purchaser's risk.

PRICES: Are f.o.b. Winchester, Tennessee, and subject to change without notice.

PACKING: Orders will be baled for shipment free of charge; however, there will be a nominal charge should boxing be necessary or requested. **TRUCKS AND/OR RAILROAD CARS WILL BE PACKED FREE OF CHARGE.**

SHIPPING: Please state method of shipment desired, whether by rail freight, truck freight, or express—and the route please.

CLAIMS: All claims for any cause must be made promptly upon receipt of order.

NON-WARRANTY: We give no warranty, expressed or implied, as to the variety of productivity of any nursery stock, seeds, or bulbs we sell. Liability in all instances is limited to the purchase price. No liability is assumed by the seller for delay or failure to deliver caused by wars, strikes, fires, floods, droughts, embargos or any other contingencies beyond our control. If purchaser does not accept goods on these terms, they are to be returned.

SOUTHERN NURSERY AND LANDSCAPE COMPANY

Winchester, Tennessee

Donnell, The Printer, Winchester, Tenn